

WELCOME TO THE CCSI FLEXICOM PRESENTATION

...the flexible way to communicate

Brief History...

CCSi/ ECI Telecom

- World leader communications
- ISO 9001 award for manufacturing excellence
- More than thirty years of experience
- Products sold worldwide



- Broadband & Narrowband
- Digital Cross-Connect
- Fixed Wireless Local Loop
- IP Telephony
- Optical Networks
- Business Systems



Coral

- First distributed microprocessor-based communication system
- Intel-based architecture
- Three distinct components: CPU, matrix and gateways (station or trunk)



Coral

- Enhanced and migrated platform as technology has evolved
- Seamless and upgradeable from 12 to more than 6,000 ports





Coral FlexiCom

Applications

Networking

Voice Processing

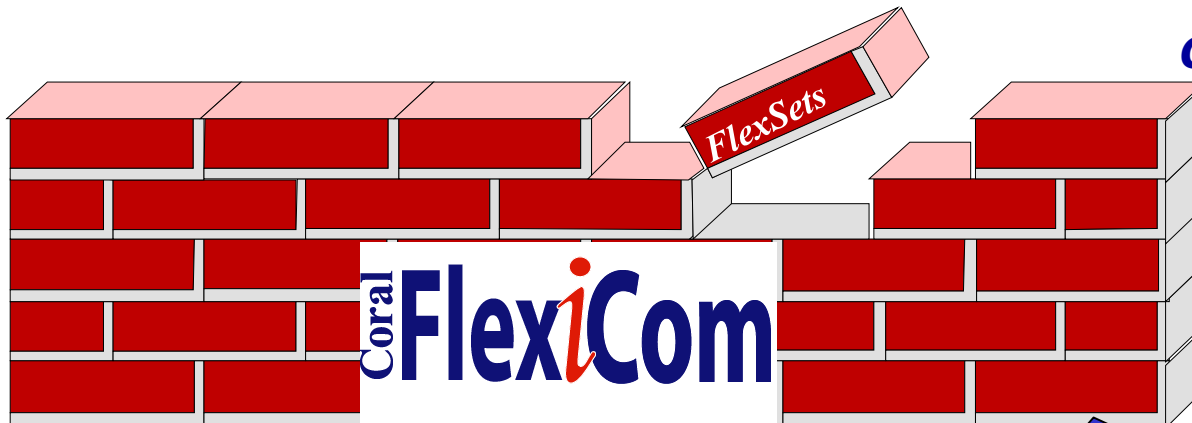
ACD

Wireless

CAP

FlexCT Applications

Conference Bridge



Communication Protocols

QSIG
IP
CT
CSTA

The Foundation

What is a Coral FlexiCom?

IP-enabled platform

- Allows customers to bridge the chasm from traditional to IP-packet switching

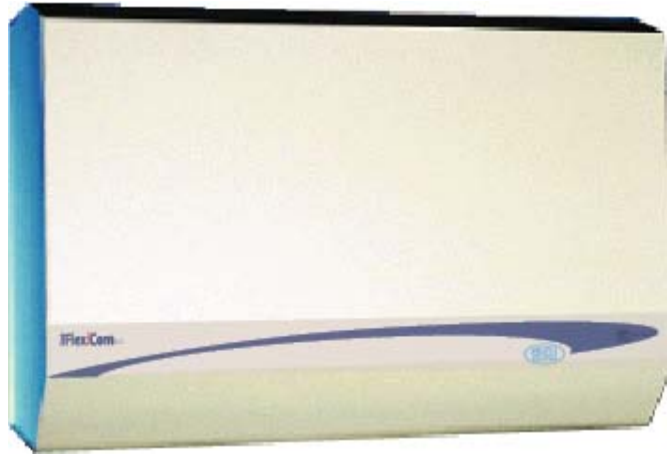


Coral FlexiCom

- FlexiCom 200
- FlexiCom 200E



Coral Flex*i*Com



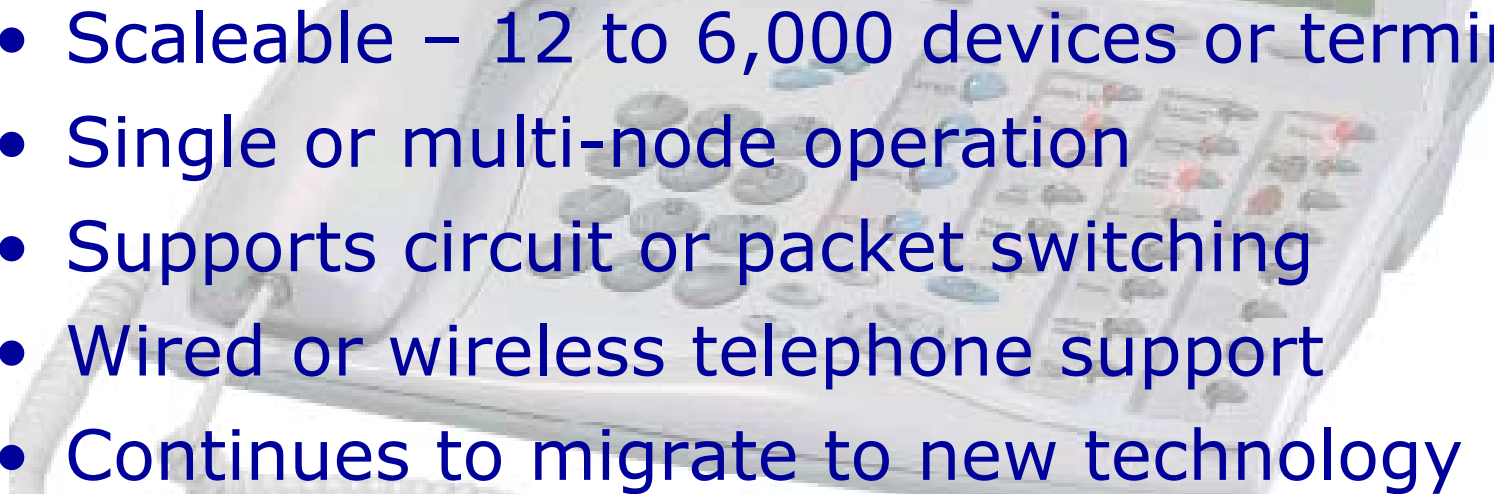
- Flex*i*Com 400
- Flex*i*Com 400V

Coral Flex*i*Com

- Flex*i*Com 5000
- Flex*i*Com 6000



FlexiCom

- 
- Scalable – 12 to 6,000 devices or terminals
 - Single or multi-node operation
 - Supports circuit or packet switching
 - Wired or wireless telephone support
 - Continues to migrate to new technology

FlexiCom 6000

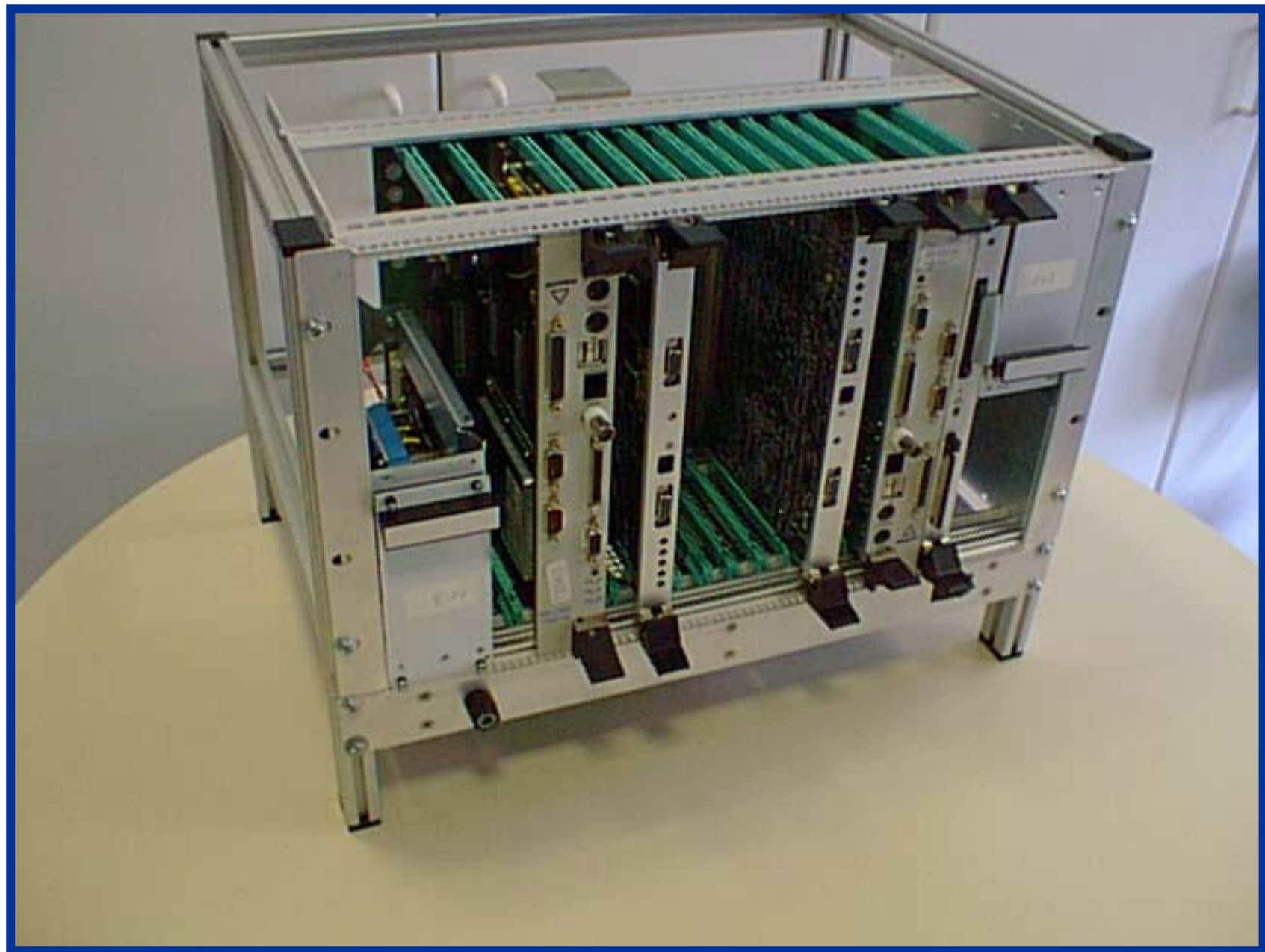
- New Coral Common Control
- Timeslot expansion
- Hot Standby options

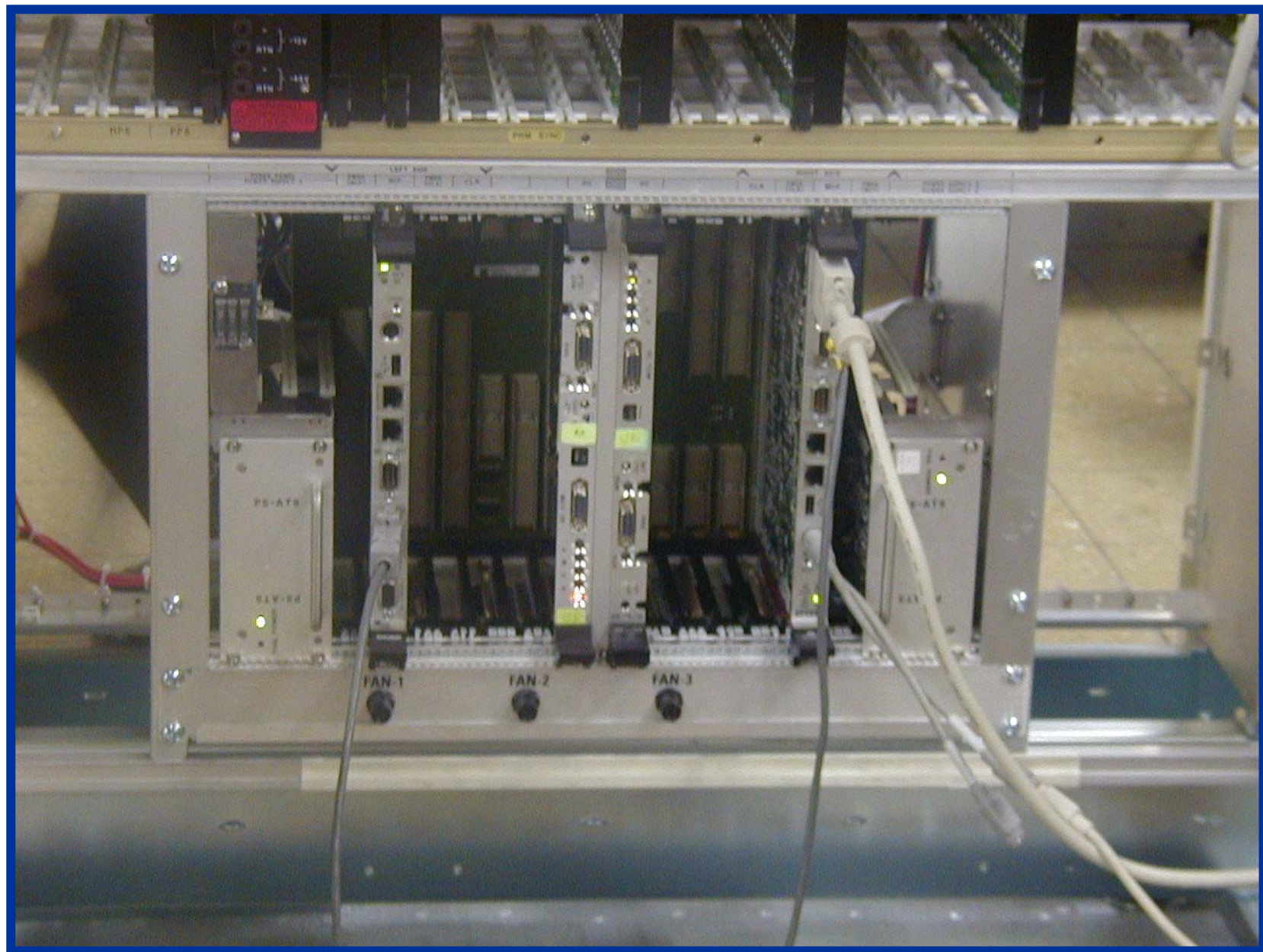


FlexiCom 6000

- New ATS Common Control
(Advanced Telecom Server)







FlexiCom 6000

- New hardware components:
 - Control Shelf & PCI Backplane
 - MCP-ATS
 - CLA
 - 16/32GC
 - XMM-Mirror Memory Expansion
 - PB-ATS
 - GC/PB-ATS Interface



New Group Controllers

- 16GC
 - 2,048 time slots
 - Single/Dual Control
- 32 GC
 - 4,096 time slots
 - Single/Dual Control



Coral FlexiCom 6000

- Busy Hour Call Attempts (+200,000)



MCP-ATS

- Industry standard Compact PCI bus interface CPU
- Industry standard PC compatible



MCP-ATS

- 200Mhz – 330Mhz Pentium processor
- Memory of 8Mbyte – 256Mbyte
- L2 Cache – 512Kbyte



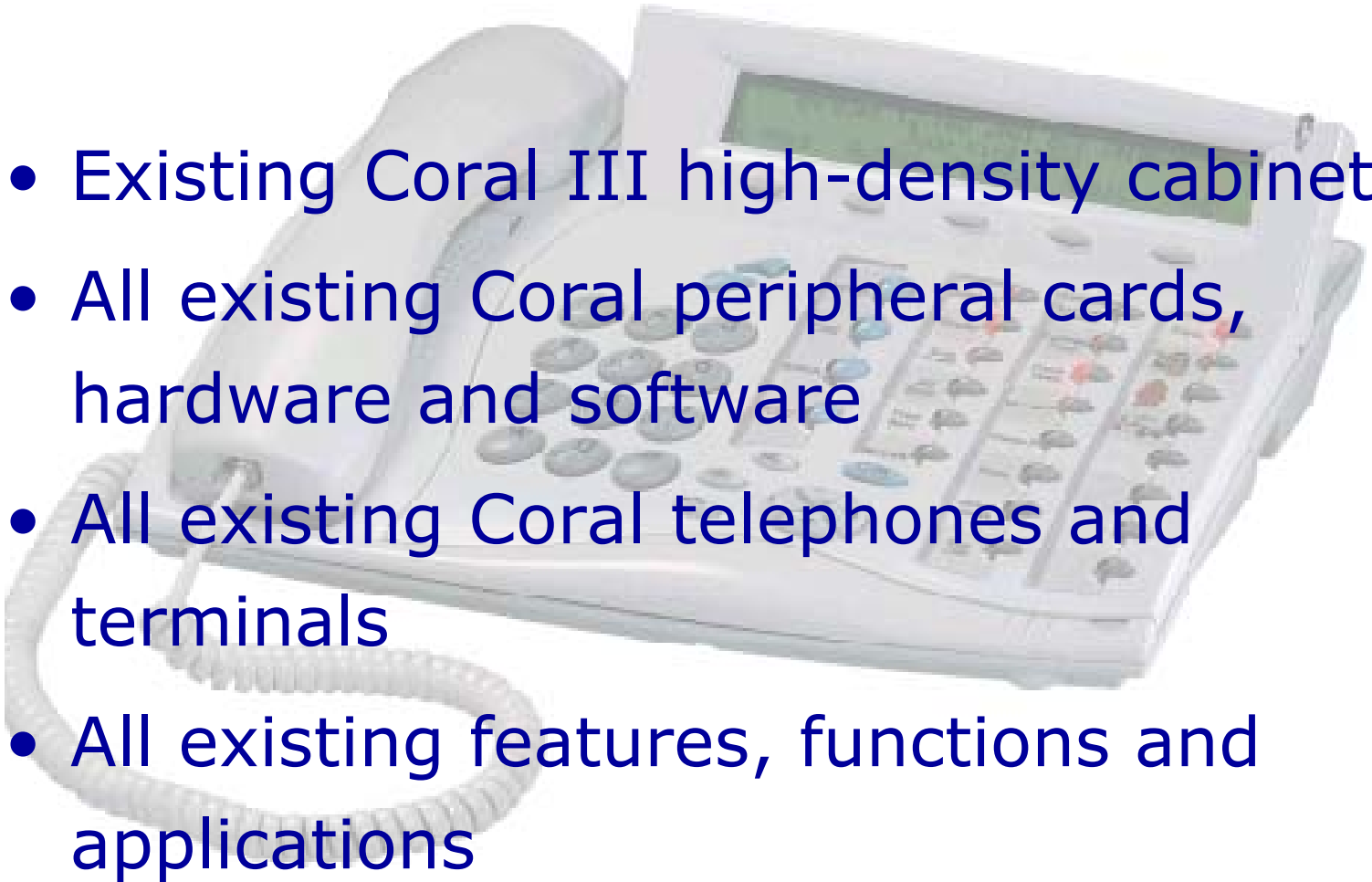
Applications

- Mission critical voice applications
 - Contact Centers
 - Hospitals
 - Government
- Non-blocking applications
- High traffic applications



Compatability

- Existing Coral III high-density cabinets
- All existing Coral peripheral cards, hardware and software
- All existing Coral telephones and terminals
- All existing features, functions and applications



- Next step in digital voice terminals





Coral FlexSet
120



Coral FlexSet
280

Coral FlexSet 120S



**Soft-
Keys**



Coral FlexSet
280D with 40B

Coral FlexSet

280S with 40B



What's in it for you?

- High traffic capability
- Enhanced reliability
- New features & functions
- Updated image at desktop
- Reduced investment

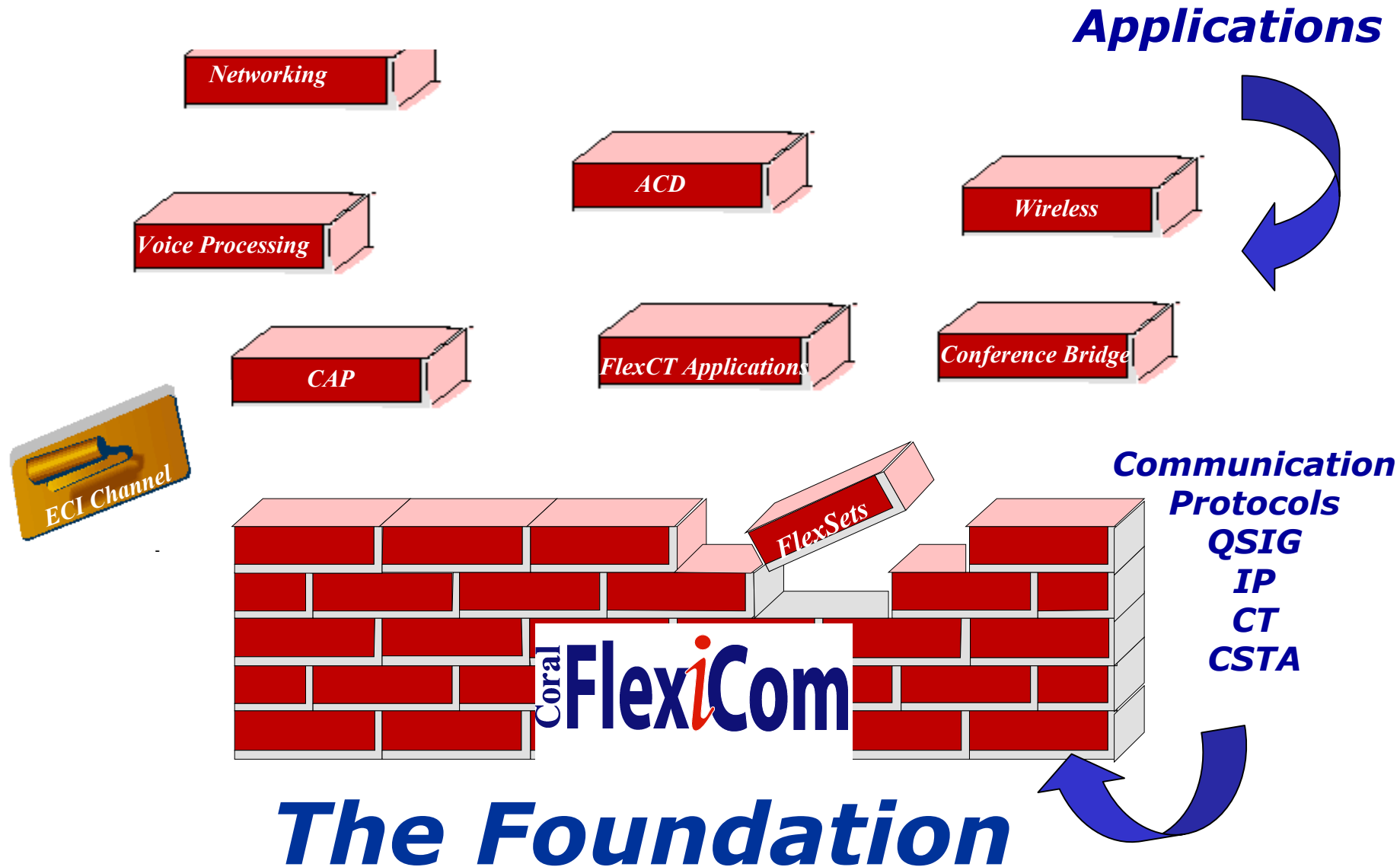


CoralView

Tools for **flexible** communications

Coral FlexiCom

The Application Server



What's all the fuss about?

- Solves a common customer concern



What's in it for you,
the customer?



CoralVIEW Suite

Windows-based software with
advanced GUI for Coral FlexiCom
programming and maintenance

CoralVIEW Programming Tools

- Configuration and Database management system
- Aimed at two user groups:
 - Dealer technicians
 - Service, Installation, Super techs
 - End user's administrator





CoralVIEW™

Administrator

Version

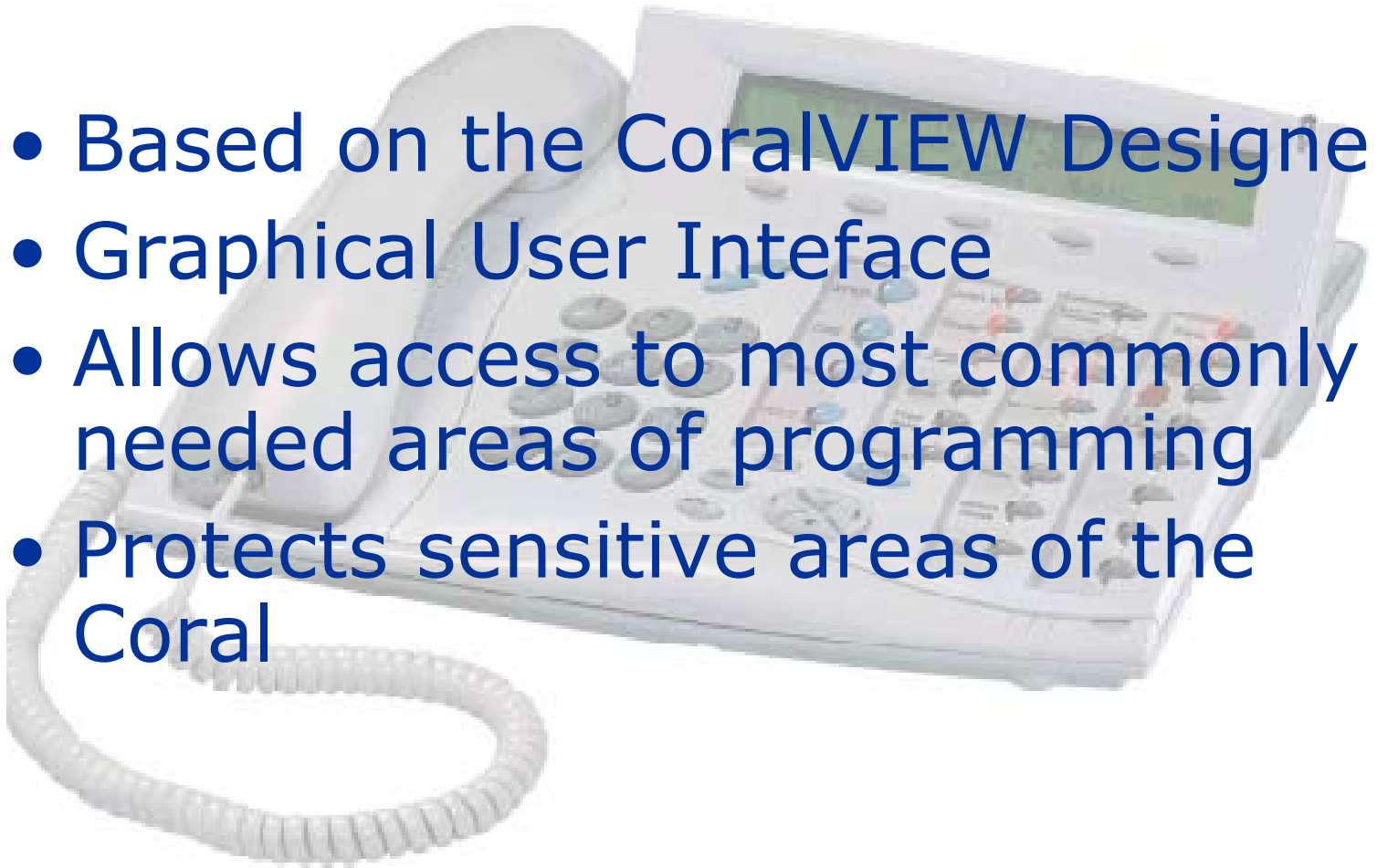


REGISTERED DESIGN

ECI Telecom LTD, 2001

CoralVIEW Administrator

- Based on the CoralVIEW Designer
- Graphical User Interface
- Allows access to most commonly needed areas of programming
- Protects sensitive areas of the Coral



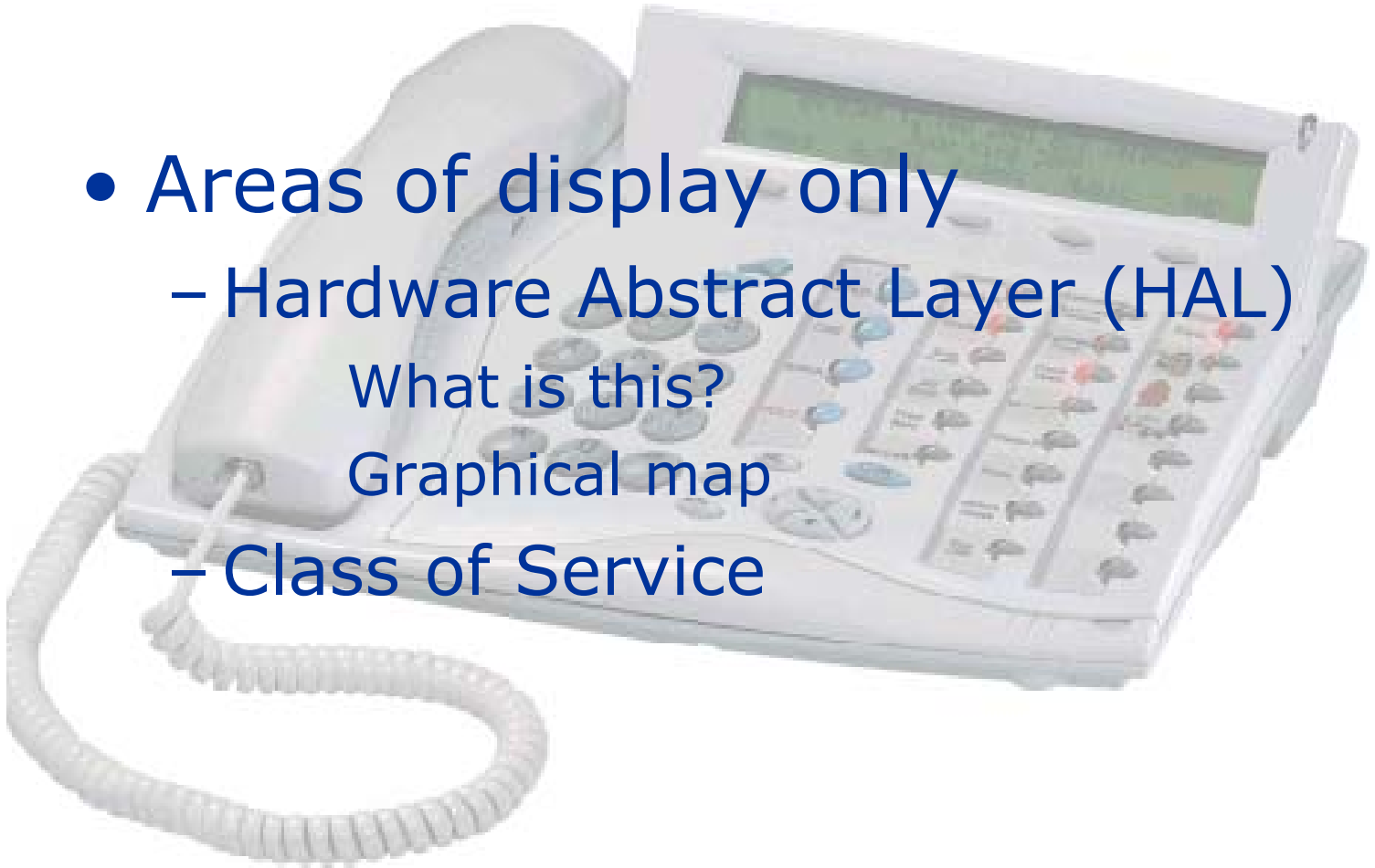
Areas of Access

CoralVIEW Administrator allows changes to the following:

1. Station definitions
2. Station features
3. Station button programming
4. Public libraries
5. Private libraries
6. Port list names
7. System time and date

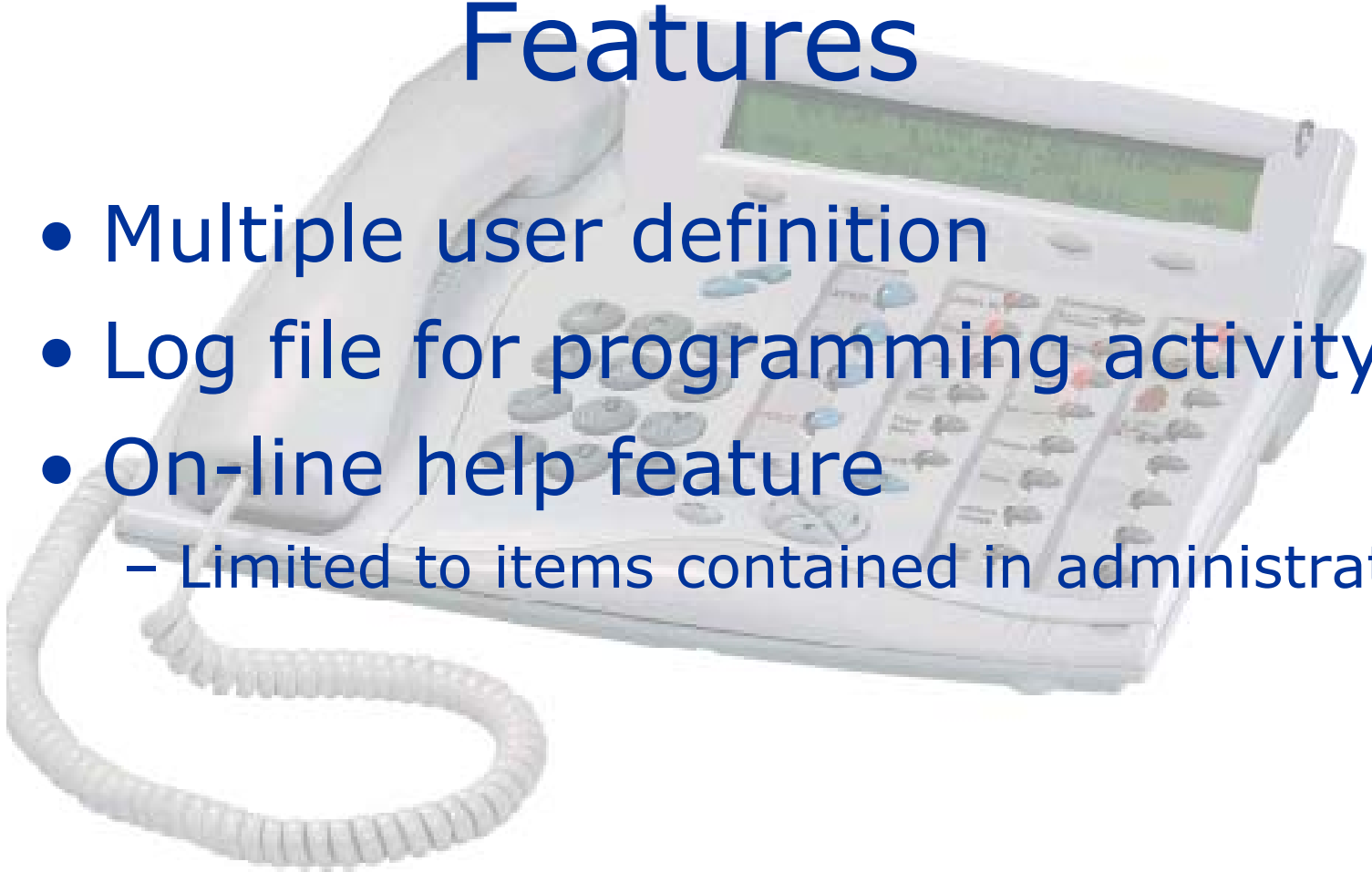
CoralVIEW Administrator

- Areas of display only
 - Hardware Abstract Layer (HAL)
What is this?
Graphical map
 - Class of Service



CoralVIEW Administrator Features

- Multiple user definition
- Log file for programming activity
- On-line help feature
 - Limited to items contained in administrator





CoralVIEW[®]

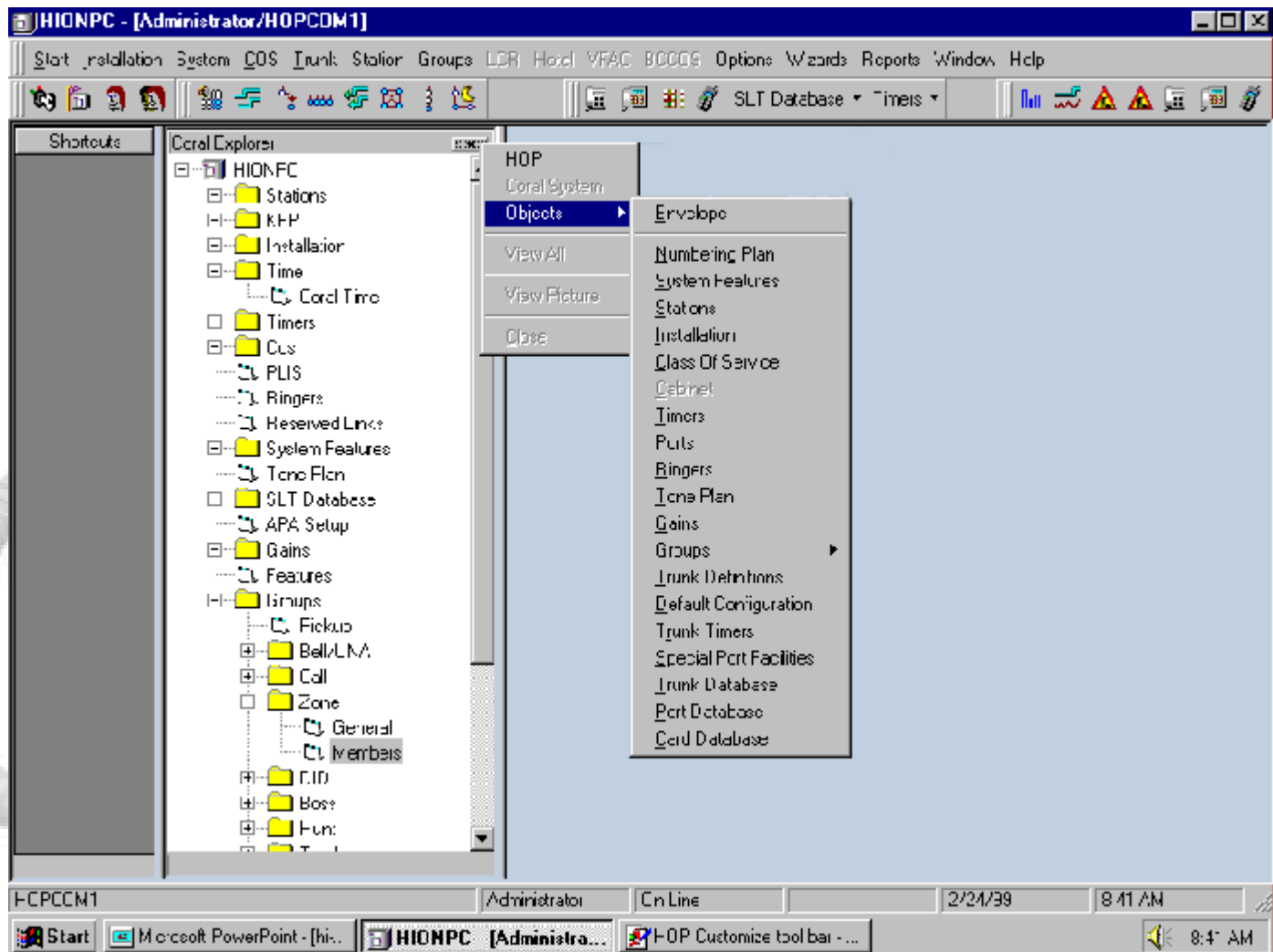
Designer

CoralVIEW Designer

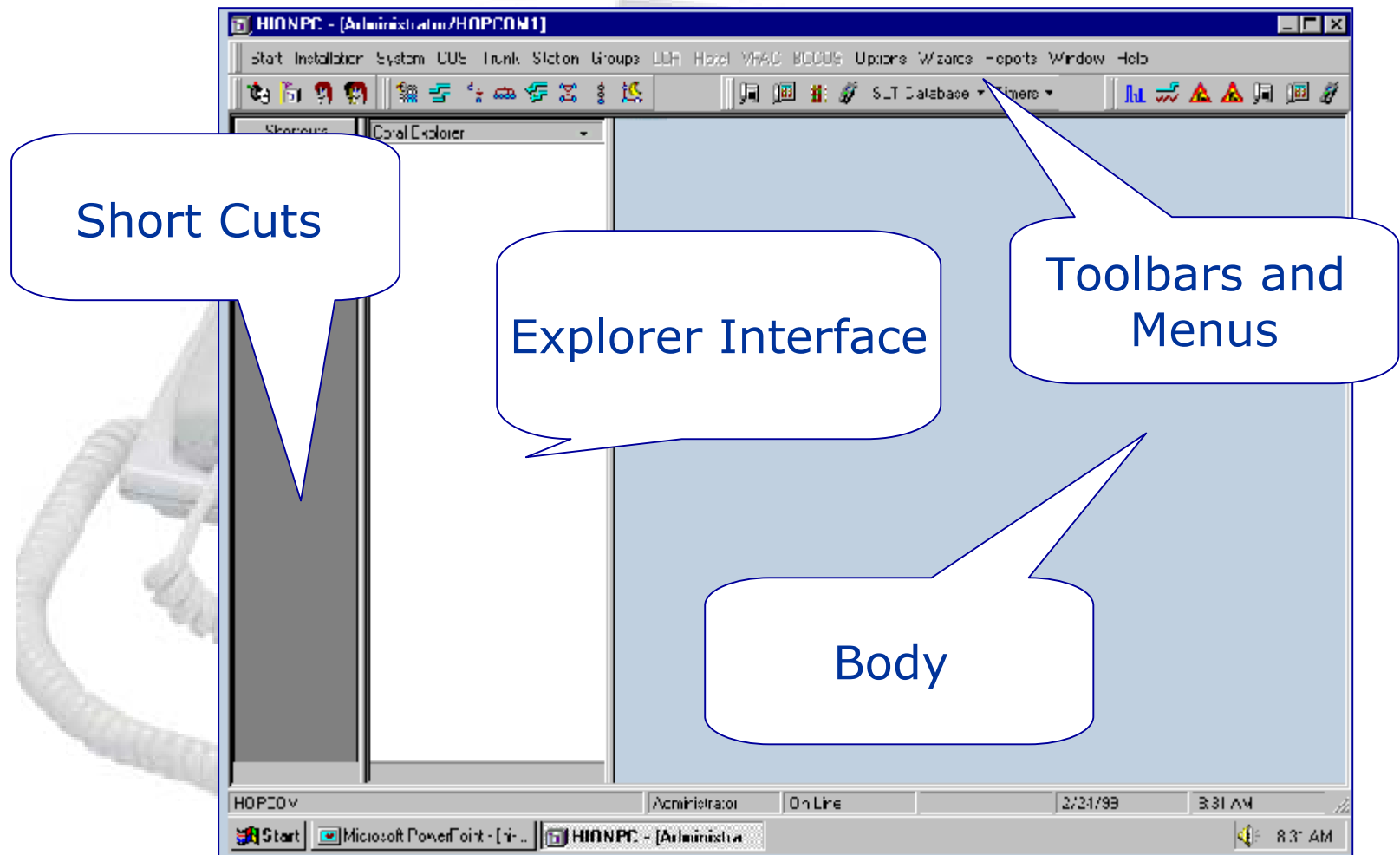
It's Here!!!



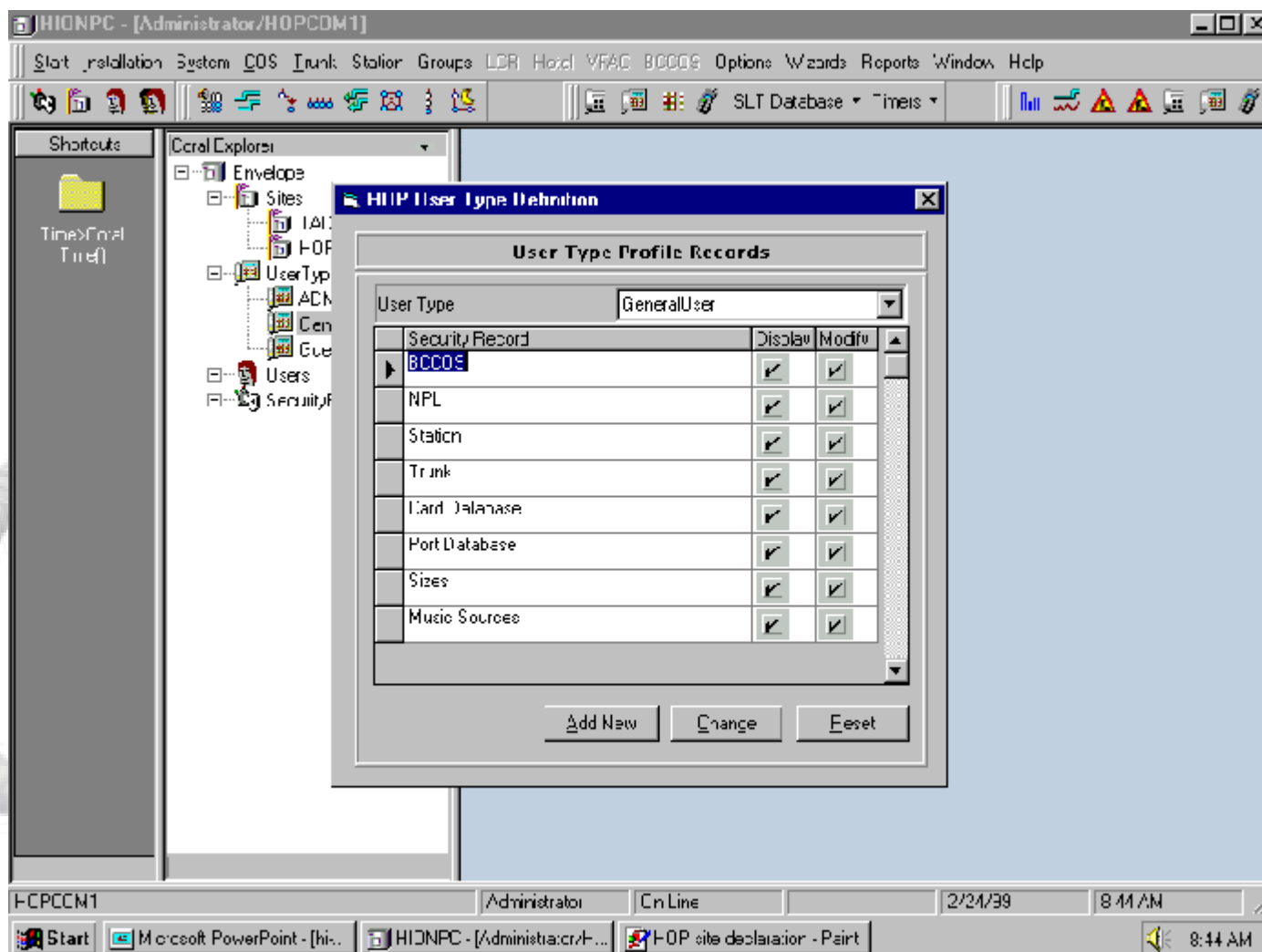
Designer Explorer Component



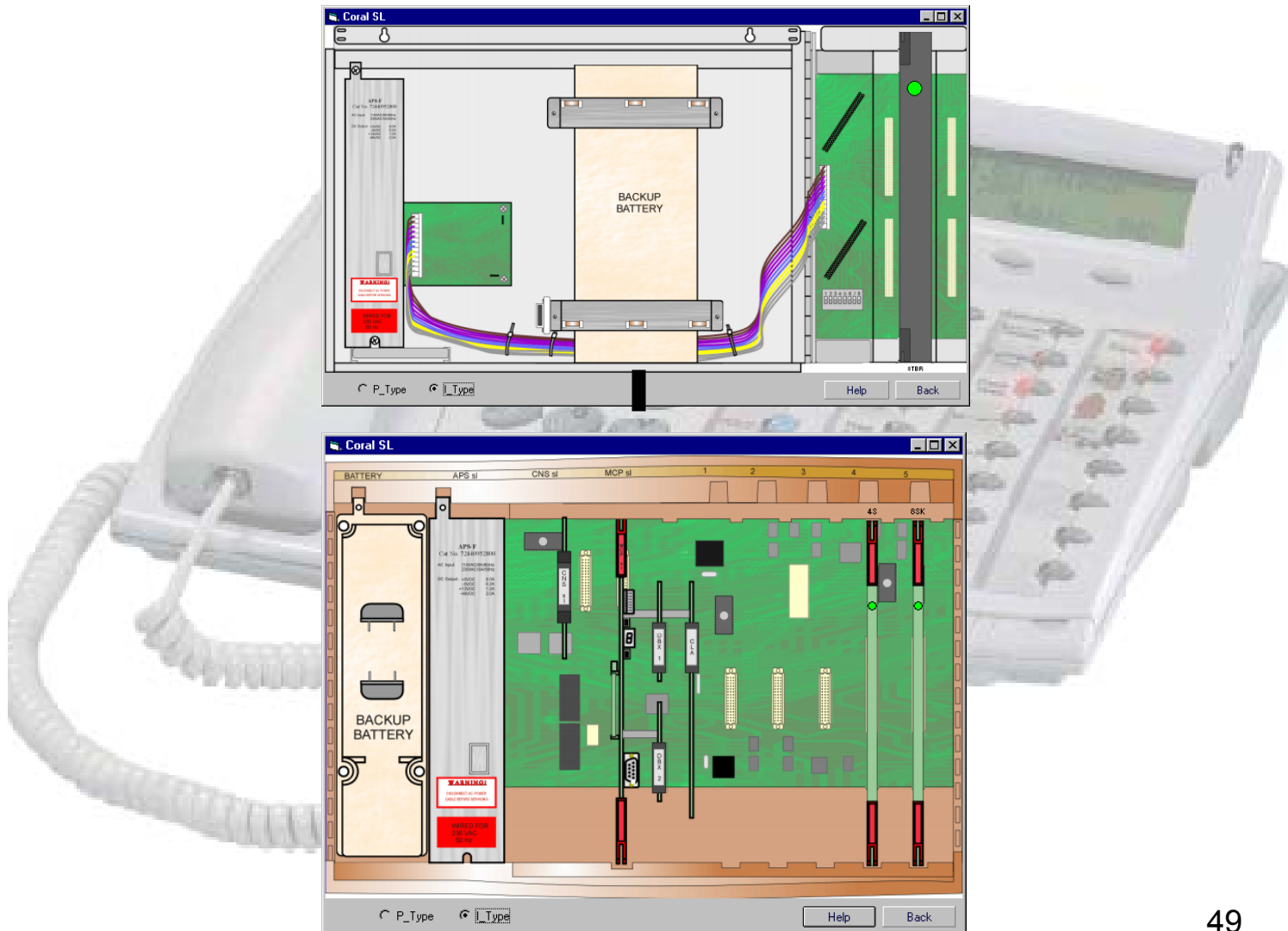
Designer Main Screen



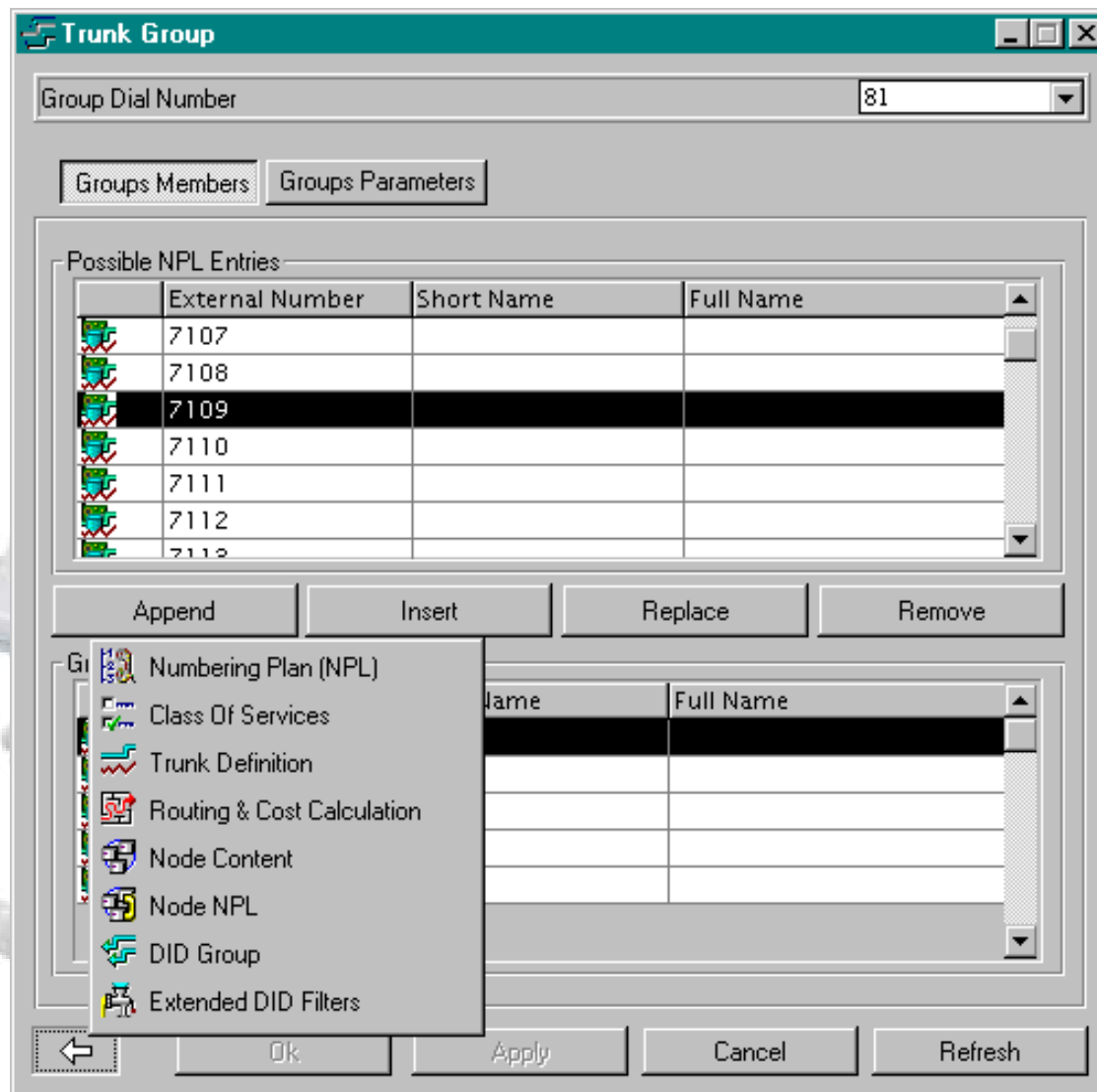
User Privileges



Cabinet View



Trunk Management



Designer Button Programming



Port List

HIONPC - [Administrator/TADIRAN]

Start Installation System COS Trunk Station Groups LCR Hotel VFAC BCCOS Options Wizards Reports Help

SLT Database Timers

User Types

Shortcuts

Cos>Station and Trunks()

Stations>DKT()

HIONPC

- Stations
- KBP
- Installation
- Time
- Timers
- Cos
- PLIS
- Ringers
- Reserved Links
- System Features
- Tone Plan
- SLT Database
- APA Setup
- Gains
- Features
- Groups
- Trunk Definitions
- Trunk Database
- 30T/x Default Configu
- Port Database
- Card Database
- ALS Card Configuratio
- Trunk Timers
- Special Port Facilities

Port List

Dial #	Port Type	PortDb #	Short Name	Long Name	Shelf #	Slot #
7070	RMI	---	MODM0		0	10
7071	RMI	---	PAGE0		0	10
7098	CONF	---			0	5
7099	CONF	---			0	5
7100	4TMR	0	CO-01		0	4
7101	4TMR	1	-2903	-2903	0	4
7102	4TMR	1	-4724	-4724	0	4
7103	4TMR	0	CO-04		0	4
7104	4TBR	0	CO-05		0	9
7105	4TBR	0	CO-06		0	9
7106	4TBR	0	CO-07		0	9
7107	4TBR	0	CO-08		0	9
7108	4TBR	0	CO-09		0	9
7109	4TBR	0	CO-10		0	9
7110	4TBR	0	CO-11		0	9
7111	4TBR	0	CO-12		0	9
7400	8SKD	---	Art		0	2
7401	8SKD	---	Kitch	Kitchen	0	2
7402	8SKD	---	Art-2		0	2
7403	8SKD	---	Lv_Ro	Living_roor	0	2
7404	8SKD	---	Up_	Upstairs	0	2
7405	8SKD	---	Jake	Jake	0	2

Sort: Filter:

Administrator On Line TADIRAN 5/20/99 10:34 AM

Start HIONPC - [Administrator/T... Port List 10:34 AM



Activity Logs

The screenshot shows the 'HIONPC - [Loggers]' application window. The title bar includes standard window controls. The menu bar contains: Start, Installation, System, COS, Trunk, Station, Groups, LCR, Hotel, VFAC, BCCOS, Options, Wizards, Reports, Window, and Help. The toolbar includes icons for various functions, with 'SLT Database' and 'Timers' being dropdown menus. The main window has three tabs: 'Connection', 'Errors', and 'Database'. The 'Database' tab is active, displaying a list of log entries. The status bar at the bottom shows 'HOPCOM1', 'Administrator', 'On Line', '2/24/99', and '8:35 AM'. The taskbar at the very bottom shows the Start button and open applications: 'Microsoft PowerPoint - [hi...', 'HIONPC - [Loggers]', and 'HOP mainscreen - Paint'.

HIONPC - [Loggers]

Start Installation System COS Trunk Station Groups LCR Hotel VFAC BCCOS Options Wizards Reports Window Help

SLT Database Timers

Connection Errors Database

Get Npl OK(0) at 8:30:40 AM

Get Complex SizeDef || 'CurrentConfig' - CANNOT_UPDATE_VARIABLE(18) || 'SystemTypeCountry' - CANNOT_UPDATE_VARIABLE(18) || 'MaxPorts' - CANNOT_UPDATE_VARIABLE(18)

Get Complex SizeTab || 'CurrentConfig' - CANNOT_UPDATE_VARIABLE(18) || 'ResourcesMax' - TWO_PARAMS(250) || 'Resources' - TWO_PARAMS(250) || 'N'

Connect Successful at 8:30:57 AM

Get Complex CoralTime || 'Time' - OK(0) || 'AmOrPm' - DONT_DISPLAY(253) || 'Year' - OK(0) || 'Month' - OK(0) || 'Day' - OK(0) at 8:33:55 AM

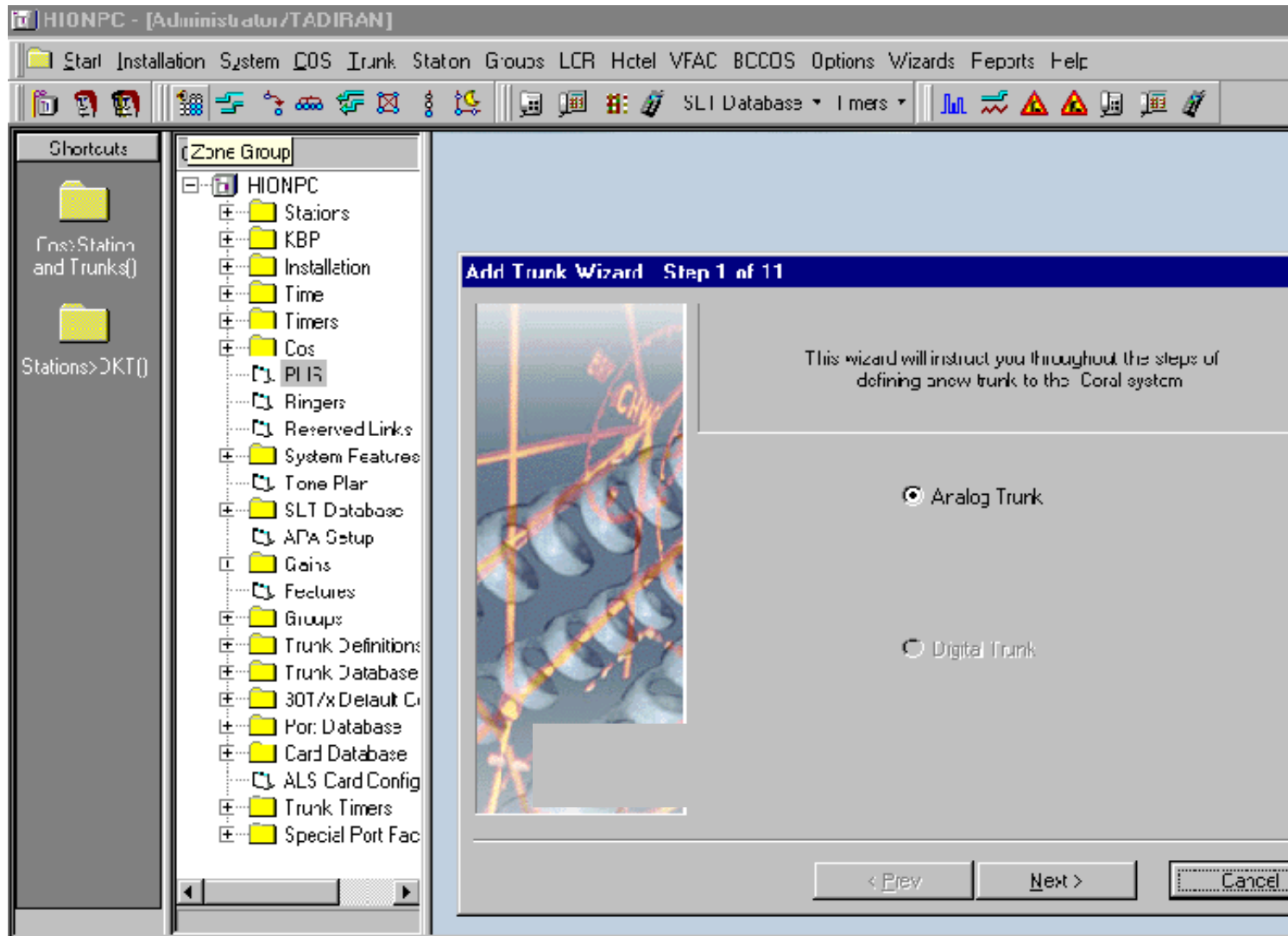
Get Group Zone Group DialNumber '7301' || 'TrntGrp' - OK(0) || 'Members' - OK(0) at 8:34:50 AM

Get Group Zone Group DialNumber '7300' || 'TrntGrp' - OK(0) || 'Members' - OK(0) at 8:34:57 AM

HOPCOM1 Administrator On Line 2/24/99 8:35 AM

Start Microsoft PowerPoint - [hi... HIONPC - [Loggers] HOP mainscreen - Paint 8:35 AM

Wizards



Wizards


Choose Available Free Npl Dial Number- Step 18 of 18

Choose Available Npl Fragments and Numbers. Selected NPL Number will be used for new added Coral Trunk. If you know available NPL number, type this number without selection.

Calculate Free NPL Number Fragments

From Number

To Number

 Calculate Fragments

☐ Available Numbers

- ☒ 1-8
- ☒ 12-49
- ☒ 60-75
- ☒ 80-80
- ☐ 90-100
 - ☐ 90
 - ☐ 91
 - ☐ 92

☒ I can specify available free NPL dial number

Free Dial Number:

[Help](#) [< Back](#) [Next >](#) [Cancel](#)

Numbering Plan

HIONPC - [Administrator/TADIRAN]

Start Installer System COS Trunk Station Groups LCR Hotel VFAE 3CCOS Options Wizards Reports Help

SLT Database Timers

Shortcuts

Cost Station and ...

Stations

Numbering Plan

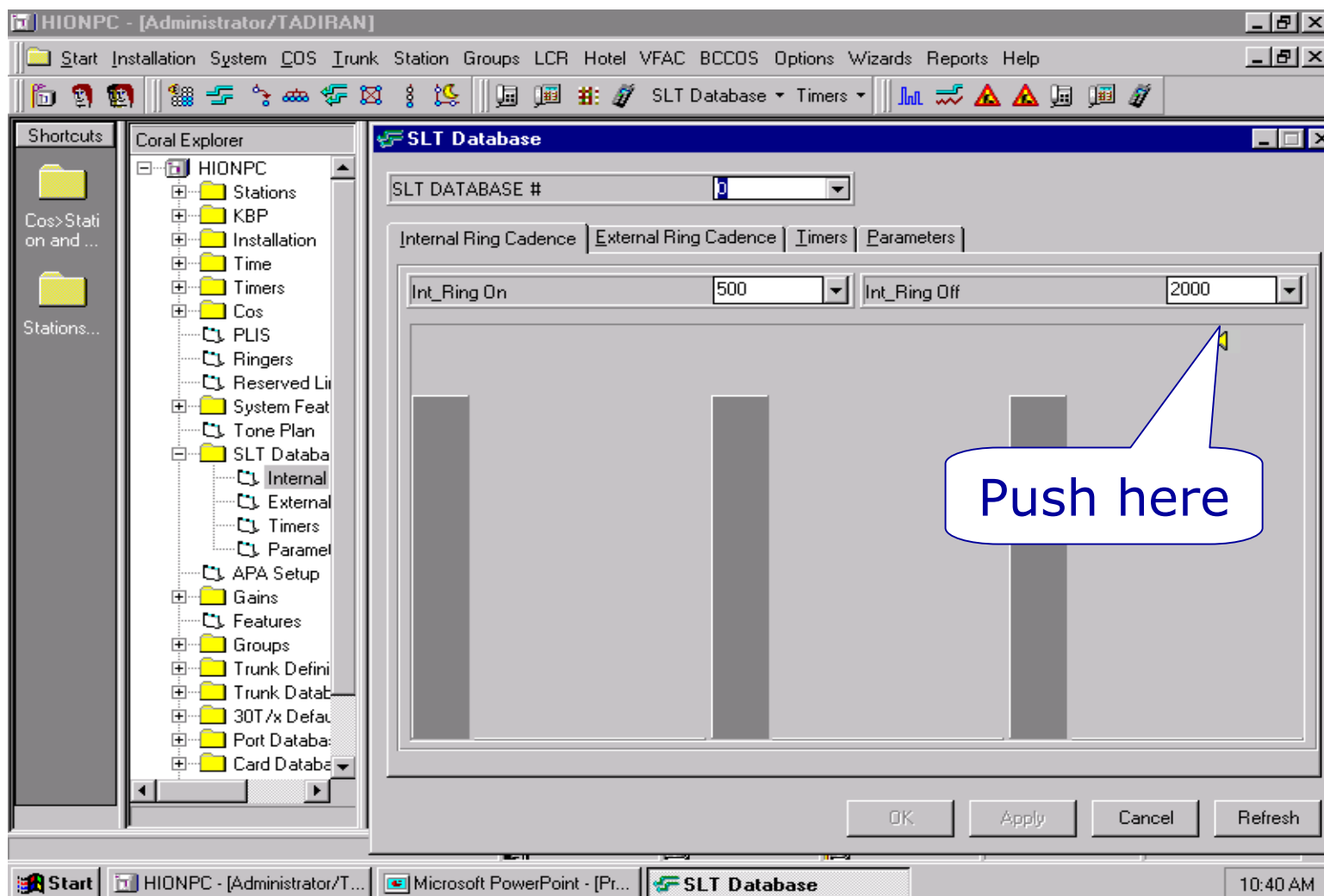
- Trunk
- SLT
- EK
- 7404-7404
- 400-403
- 405-409
- Voices Page
- Trunk Group
- Hunt Group
- Ess Group
- Trunk Library
- 3000-6999
- DVMS Library
- Feature
- Edit
- UNA
- Page
- RMI Model
- DIC
- Zone Group
- Relay

External Number	Full Name	Short Name	NPL Type	System Type	Index
6000	Voice Mail	Vv	TRUNK_LIE..	TRUNK_LIB..	0
6001	Teldia		TRUNK_LIE..	TRUNK_LIB..	1
6002	Eob Funk		TRUNK_LIE..	TRUNK_LIB..	2
6003	Pinchas Just		TRUNK_LIE..	TRUNK_LIB..	3
6004	Wences Sanchez		TRUNK_LIE..	TRUNK_LIB..	4
6005	Skip Weddle		TRUNK_LIE..	TRUNK_LIB..	5
6006	John Roth		TRUNK_LIE..	TRUNK_LIB..	6
6007	Gene Price		TRUNK_LIE..	TRUNK_LIB..	7
6008			TRUNK_LIE..	TRUNK_LIB..	8
6009			TRUNK_LIE..	TRUNK_LIB..	9
6010			TRUNK_LIE..	TRUNK_LIB..	10
6011	SPID_848-8286		TRUNK_LIE..	TRUNK_LIB..	11
6012	Roll Over		TRUNK_LIE..	TRUNK_LIB..	12
6013	SPID_848-8071		TRUNK_LIE..	TRUNK_LIB..	13
6014	SPID_848-2915		TRUNK_LIE..	TRUNK_LIB..	14
6015	Ar		TRUNK_LIE..	TRUNK_LIB..	15
6016			TRUNK_LIE..	TRUNK_LIB..	16
6017			TRUNK_LIE..	TRUNK_LIB..	17
6018			TRUNK_LIE..	TRUNK_LIB..	18
6019			TRUNK_LIE..	TRUNK_LIB..	19
6020			TRUNK_LIE..	TRUNK_LIB..	20

Administrator On Line TADIRAN E/20/99 10:49 AM

Start HIONPC - [Administra... Microsoft PowerPoint - [Pr... 10:49 AM

Visual and Audible



Reporting Mechanism

HIONPC - [Administrator/TADIRAN]

Start Installation System COS Trunk Station Groups LCR Hotel VFAC BCCOS Options Wizards Reports Help

SLT Database Timers

Shortcuts User Types

Stations and Trunks()

Stations>DKT()

HIONPC

- Stations
- KBP
- Installation
- Time
- Timers
- Cos
- PLIS
- Ringers
- Reserved Links
- System Features
- Tone Plan
- SLT Database
- APA Setup
- Gains
- Features
- Groups
- Trunk Definitions
- Trunk Database
- 30T/x Default Configu
- Port Database
- Card Database
- ALS Card Configuratio
- Trunk Timers
- Special Port Facilities

Port List

Dial #	Port Type	PortDb #	Short Name	Long Name	Shelf #	Slot #	
7070	RMI	---	MODM0		0	10	3
7071	RMI	---	PAGE0		0	10	7
7098	CONF	---			0	5	0
7099	CONF	---			0	5	1
7100	4TMR	0	CO-01		0	4	0
7101	4TMR	1	-2903	-2903	0	4	1
7102	4TMR	1	-4724	-4724	0	4	2
7103	4TMR	0	CO-04		0	4	3
7104	4TBR	0	CO-05		0	9	0
7105	4TBR	0	CO-06		0	9	1
7106	4TBR	0	CO-07		0	9	2
7107	4TBR	0	CO-08		0	9	3
7108	4TBR	0	CO-09		0	9	4
7109	4TBR	0	CO-10		0	9	5
7110	4TBR	0	CO-11		0	9	6
7111	4TBR	0	CO-12		0	9	7
7400	8SKD	---	Art		0	2	0
7401	8SKD	---	Kitch	Kitchen	0	2	1
7402	8SKD	---	Art-2		0	2	2
7403	8SKD	---	Lv_Ro	Living_room	0	2	3
7404	8SKD	---	Up_	Upstairs	0	2	4
7405	8SKD	---	Jake	Jake	0	2	5

Sort : Filter :

Administrator On Line TADIRAN 5/20/99 10:34 AM

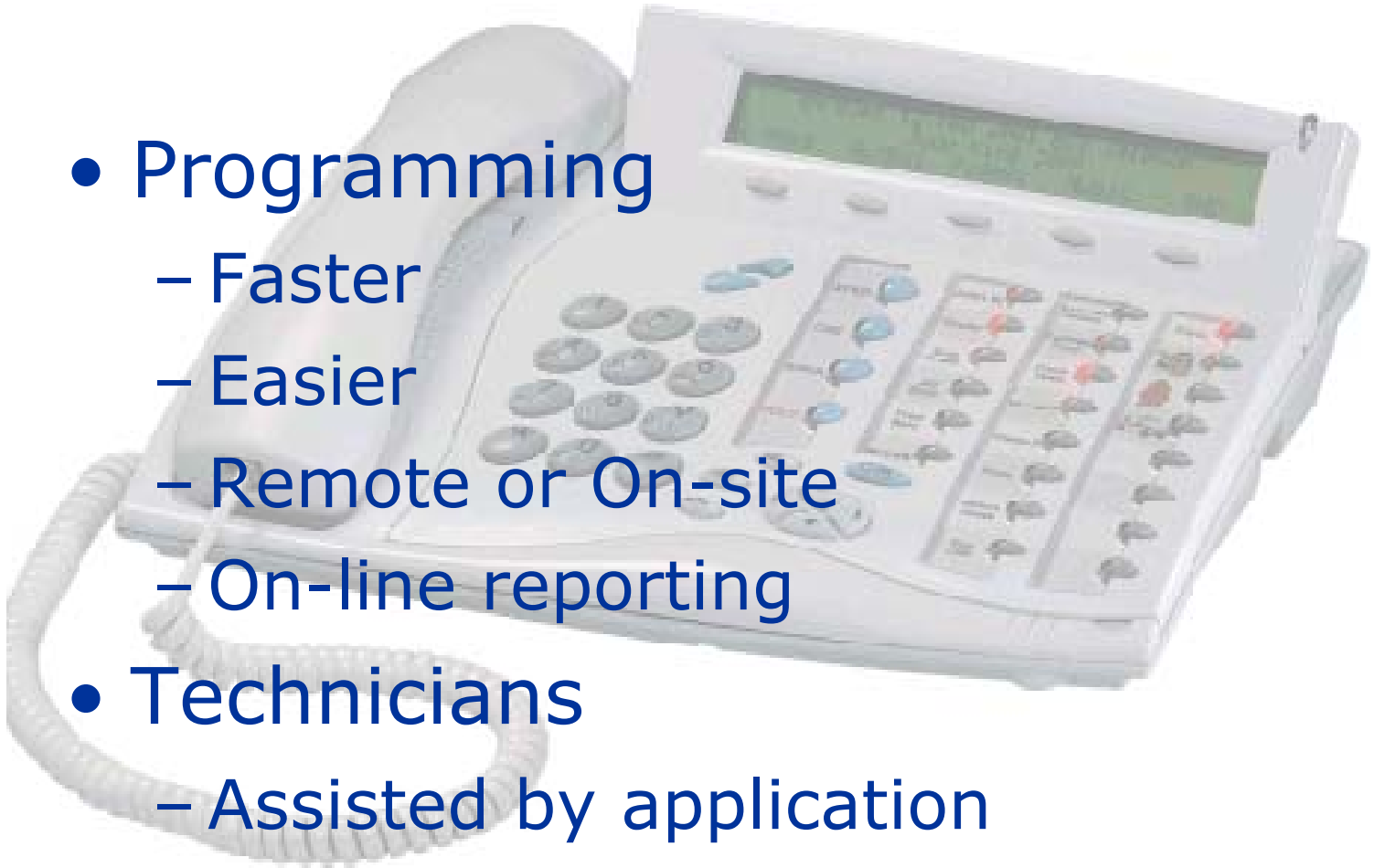
Start HIONPC - [Administrator/T... Port List 10:34 AM

Architecture



Benefits

- Programming
 - Faster
 - Easier
 - Remote or On-site
 - On-line reporting
- Technicians
 - Assisted by application



Benefits

- Wizards
- On-line help
- Search and sorting capabilities



Two Types of Designer

- CoralVIEW Designer
 - Single site administration
 - Locked to single SAU number
- CoralVIEW Designer Pro
 - Multi-site administration
 - Dealer Service and Customer MIS



Operating Systems

- Designer and Designer Pro
 - Windows NT Workstation/NT/2000
- Administrator
 - Windows 95/98/ME/2000/NT



Summary of CoralVIEW Family

- CoralVIEW Administrator
- CoralVIEW Designer
- CoralVIEW Designer Pro



Tools for **flexible** communications